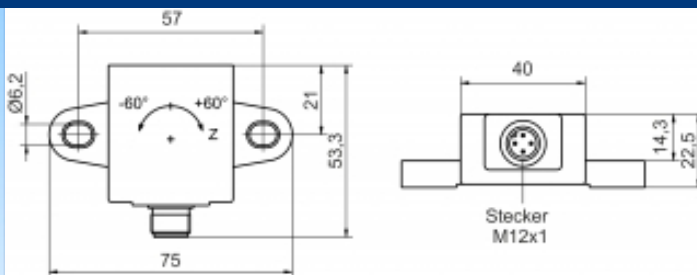
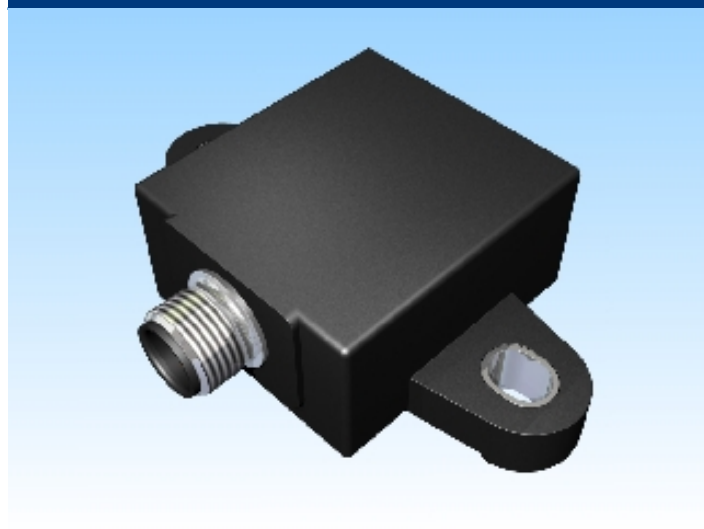




[Article Page](#)

**Product Description**

**inclination sensor**



Name	KN60-Q40KN-ANU-V2
Order number	08330000501
Mounting	 non shielded
Switch type	 analog
Signal Type	Analog Voltage
Connection	connector M12
Dimension (in mm)	Q 53,3 x 22,5 x 75

**Technical Specification**

Special features	analog Output voltage 1 channel
Operating voltage	10 - 30 V DC
Max. load current	20 mA
No load current	≤ 14 mA
Treshold frequency	2 Hz
Operating temperature	-40 ° C to 85 ° C
Temperature drift	+/- 0,115 °/K
Switching state	LED
Analog output	Pulso_has1 1 ... 9 Volt
Real sensitivity	typ 66,67 mV/°
Time delay	200 ms
Resolution	typ. = 450 Ohm
FIT / MTTF acc. to SIEMENS 29500	315,4 / 362y



## **KN60-Q40KN-ANU-V2**

Pulsotronic GmbH & Co. KG Neue Schichtstraße 14b 09366 Niederdorf Deutschland +49 (0)37296 930-200

**Errors and omissions excepted**