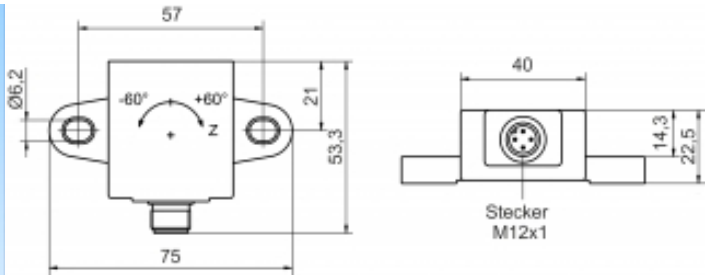
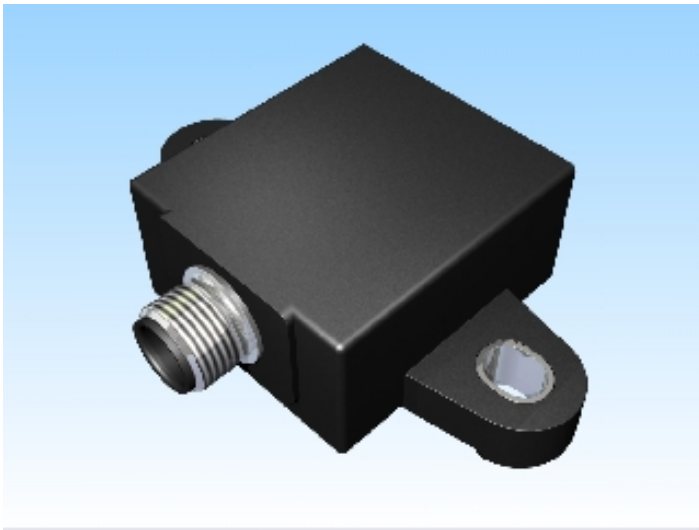




[Article Page](#)



Name	KN60-Q40KN-ANI-V2
Order number	08330000080
Switching distance	60
Mounting	 non shielded
Switch type	 analog
Signal Type	analog current
Connection	connector M12
Dimension (in mm)	Q 53,3 x 22.5 x 75
Special features	analog current output 1 channel
Operating voltage	9 - 30 V DC
Max. ripple	≤ 10 %
Max. load current	40 mA
No load current	≤ 16 mA
Treshold frequency	2 Hz
Operating temperature	-40 ° C to 85 ° C
Temperature drift	+/- 0,012 °/K
Swiching state	LED
Analog output	Pulso_has14 ... 20 mA
Real sensitivity	typ. 133,3 µA
Time delay	200 ms
Resolution	