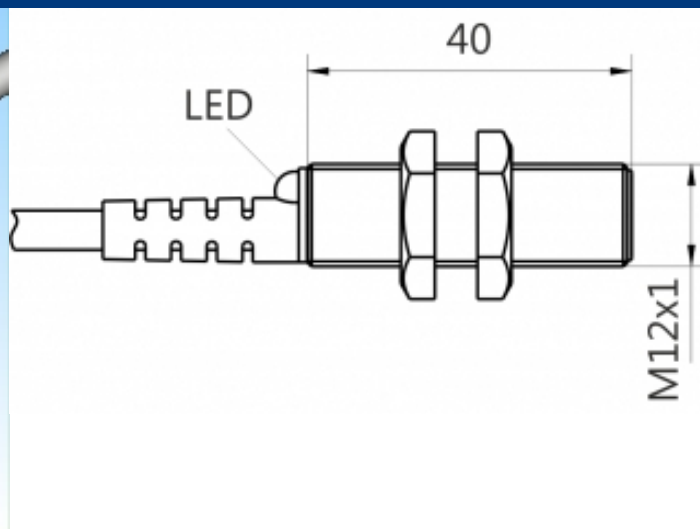
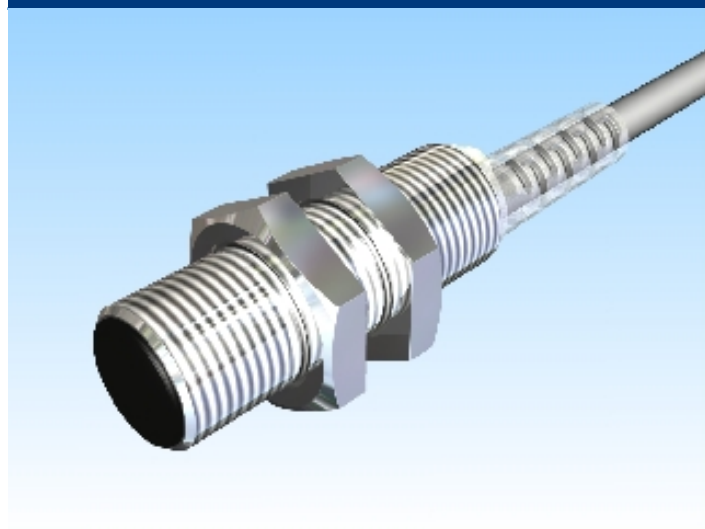


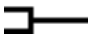


[Article Page](#)

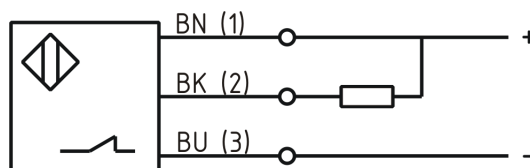
Product Description

inductive sensor DC



| | |
|--------------------|--|
| Name | KJ2-M12MB40-DNÖ |
| Order number | 08317624500 |
| Matchcode | 9962-4500 |
| Switching distance | 2 mm |
| Mounting |  shielded |
| Switch type |  N.C. |
| Signal Type | DC NPN |
| Connection |  Cable |

Connection diagramm



Dimension (in mm) fine-pitch thread M12 x 40

Technical Specification

| | |
|----------------------|-------------|
| Operating voltage | 10 - 30 VDC |
| Max. ripple | ≤ 10 % |
| Voltage drop | 2,4 V |
| Max. load current | 200 mA |
| No load current | ≤ 13 mA |
| Leakage current | ≤ 10 μA |
| Switching frequency | 1000 |
| Switching hysteresis | ≤ 15 % |

| | |
|----------------------------|------------------------------|
| Operating temperature | -25 ° C to 70 ° C |
| Temperature drift | ≤ 10 % |
| Repeat accuracy | ≤ 10 % |
| Swiching state | LED |
| Short-circuit proof | yes |
| Overload protection | yes |
| Reverse voltage protection | yes |
| Protection category | IP67 |
| EMC-level | DIN EN 60947-5-2:2008 |
| Material active face | PA 6.6 |
| Cable length | 2 m |
| Cable material | PVC LIYY |
| Termination | 2m PVC 3x0,34mm ² |
| FIT / MTTF | 52,82 / 2161y |

Errors and omissions exceptet