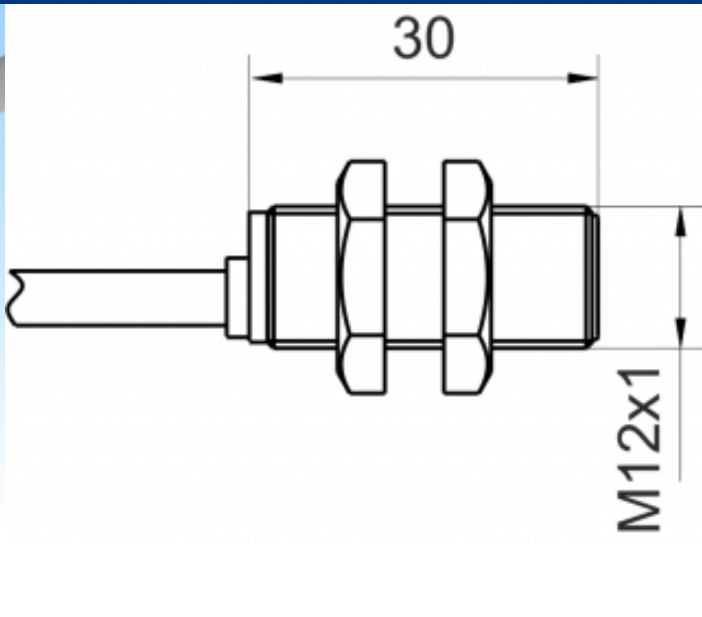
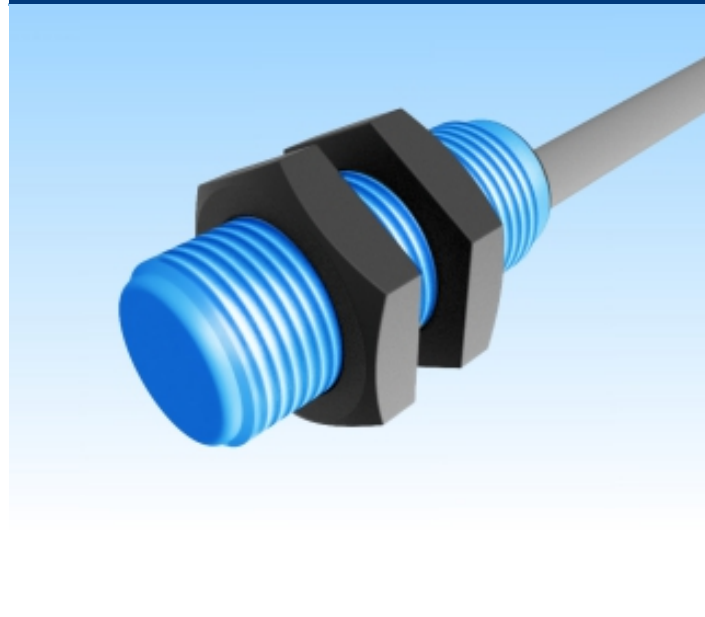

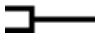
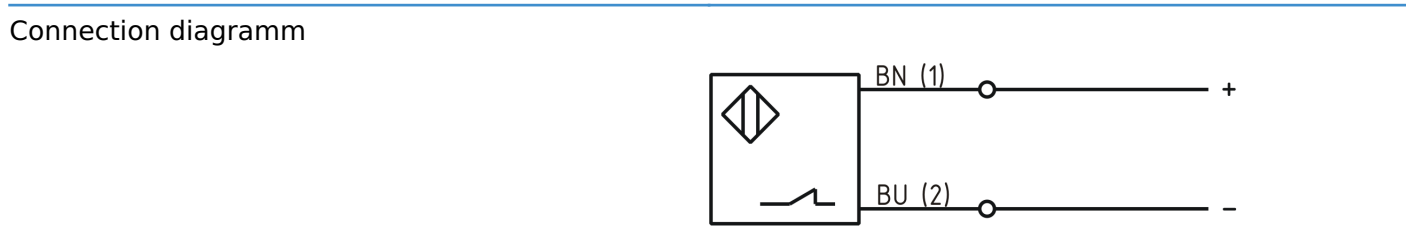


[Article Page](#)

Product Description **inductive sensor NAMUR**



Name	KJ4-M12KN30-NA-HT125-X0241
Order number	08317321032
Matchcode	9932-1032
Switching distance	4 mm
Mounting	 non shielded
Signal Type	Namur
Connection	 Cable



Dimension (in mm)	fine-pitch thread M12 x 30
-------------------	----------------------------

Technical Specification

Special features	temperature resistant up to 125°C 5m PTFE-connecting cable
Max. ripple	≤ 5 %
No load current	≤ 3,5 mA
Switching frequency	1000 Hz
Operating temperature	-40 ° C to 125 ° C
Temperature drift	≤ 10 %
Repeat accuracy	≤ 10 %
Time delay	100 ms
Short-circuit proof	yes

Overload protection	yes
Reverse voltage protection	yes
Protection category	IP67
EMC-level	DIN EN 60947-5-6:2000-12
Housing material	Arnite
Cable length	5 m
Utilisation category	DC 13
Cable material	PTFE grau (grey)
Nominal operating voltage	8,2 V DC
Cable cross	2x0.25 mm ²
Load Current OFF	ca. 0,5 mA
Load Current ON	ca. 3,5 mA
FIT / MTTF acc. to SIEMENS 29500	20,95 / 5449y

Errors and omissions exceptet