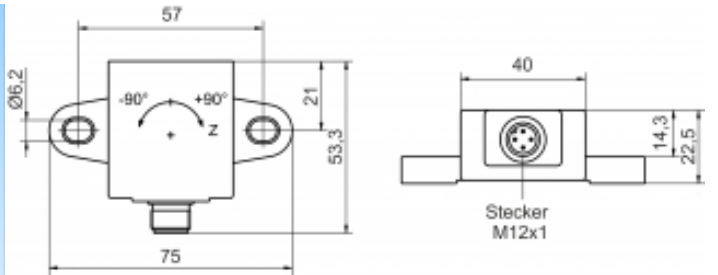
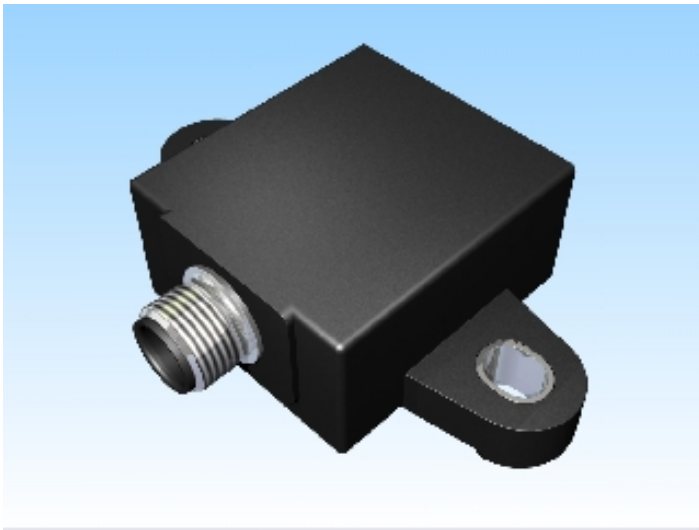




[Article Page](#)



Name	KN90-Q40KN-ANI-V2
Order number	08330000076
Mounting	 non shielded
Switch type	 analog
Signal Type	analog current
Connection	connector M12
Dimension (in mm)	Q 53,3 x 22.5 x 75
Special features	analog current Output 1 channel
Operating voltage	9 - 30 V DC
No load current	≤ 16 mA
Treshold frequency	2 Hz
Operating temperature	-40 ° C to 85 ° C
Temperature drift	+/- 0,115 °/K
Swiching state	LED
Analog output	Pulso_has1 4 ... 20 mA
Real sensitivity	typ. 88,89 µA/°
Time delay	200 ms
Resolution	