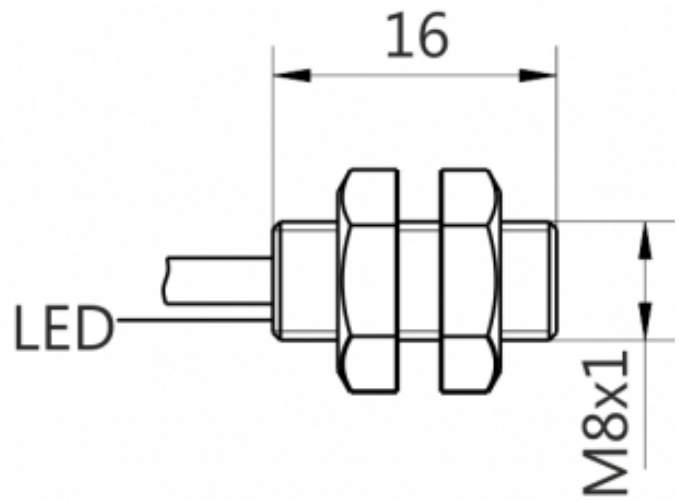
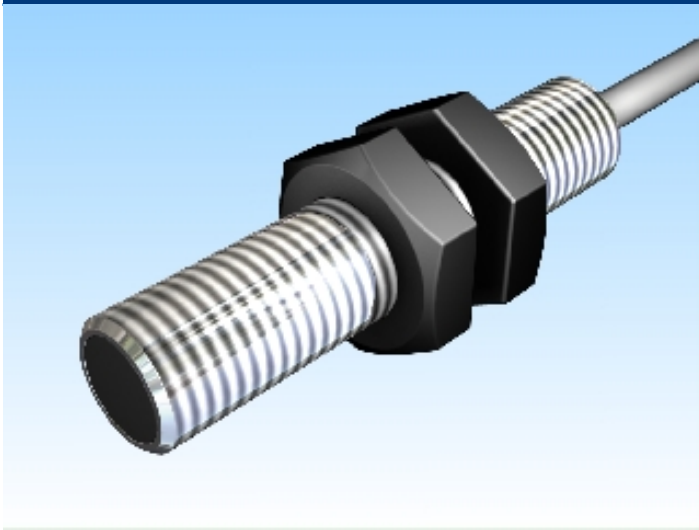


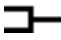


[Article Page](#)

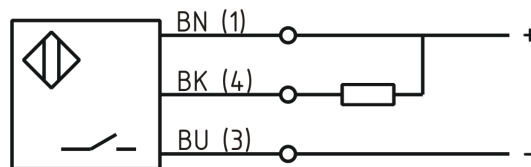
Product Description

inductive sensor DC



Name	KJ1,5-M8EB16-DNS
Order number	08313080153
Switching distance	1,5 mm
Mounting	 shielded
Switch type	 N.O.
Signal Type	DC NPN
Connection	 Cable

Connection diagramm



Dimension (in mm)	M8x1 x 16
-------------------	-----------

Technical Specification

Operating voltage	10 - 30 VDC
Max. ripple	≤ 10 %
Voltage drop	2,4 V
Max. load current	200 mA
No load current	≤ 10 mA
Leakage current	≤ 10 μA
Switching frequency	2000 Hz
Switching hysteresis	≤ 15 %
Operating temperature	-25 ° C to 70 ° C

Temperature drift	≤ 10 %
Repeat accuracy	≤ 5 %
Swiching state	LED
Short-circuit proof	yes
Overload protection	yes
Reverse voltage protection	yes
Protection category	IP67
EMC-level	DIN EN 60947-5-2:2008
Housing material	Stainless steel V2A
Material active face	PBT
Cable length	2 m
Utilisation category	DC13
Cable material	PVC
Cable cross	3x0.14 mm ²
Termination	2m PVC 3x0.14mm ²

Errors and omissions exceptet