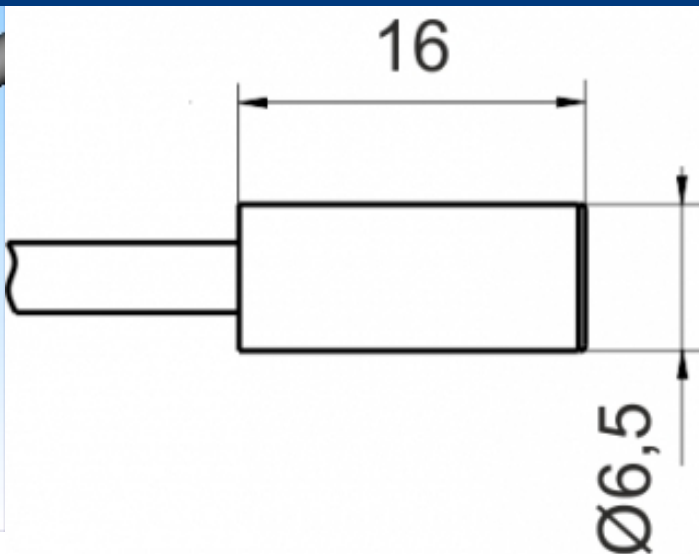
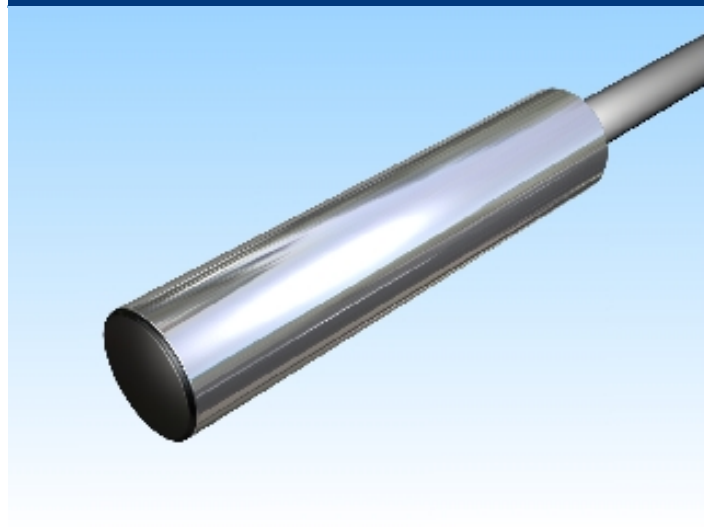


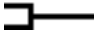


[Article Page](#)

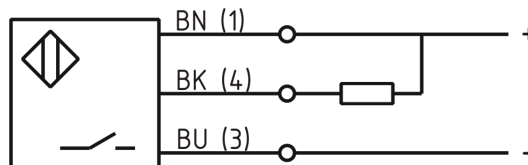
**Product Description**

**inductive sensor DC**



|                    |  |
|--------------------|--|
| Name               | KJ1,5-G6,5EB16-DNS   |
| Order number       | 08313650153  |
| Switching distance | 1,5 mm   |
| Mounting           |  shielded |
| Switch type        |  N.O.     |
| Signal Type        | DC NPN   |
| Connection         |  Cable    |

Connection diagramm



|                   |            |
|-------------------|------------|
| Dimension (in mm) | 6,5 x x 16 |
|-------------------|------------|

**Technical Specification**

|                      |             |
|----------------------|-------------|
| Operating voltage    | 10 - 30 VDC |
| Max. ripple          | ≤ 10 %      |
| Voltage drop         | 2,4 V       |
| Max. load current    | 200 mA      |
| No load current      | ≤ 10 mA     |
| Leakage current      | ≤ 10 µA     |
| Switching frequency  | 2000 Hz     |
| Switching hysteresis | ≤ 15 %      |

|                            |                        |
|----------------------------|------------------------|
| Operating temperature      | -25 ° C to 70 ° C      |
| Temperature drift          | ≤ 10 %                 |
| Repeat accuracy            | ≤ 5 %                  |
| Swiching state             | LED                    |
| Short-circuit proof        | yes                    |
| Overload protection        | yes                    |
| Reverse voltage protection | yes                    |
| Protection category        | IP67                   |
| EMC-level                  | DIN EN 60947-5-2: 2008 |
| Housing material           | Stainless steel V2A    |
| Material active face       | PBT                    |
| Cable length               | 2 m                    |
| Utilisation category       | DC 13                  |
| Cable material             | PVC grau LIYY          |
| Cable cross                | 3x0.14 mm <sup>2</sup> |

**Errors and omissions exceptet**