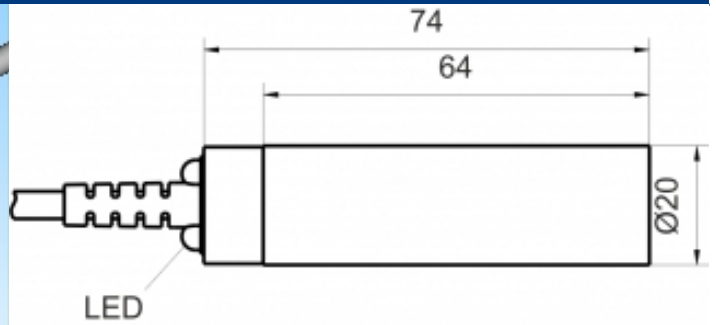
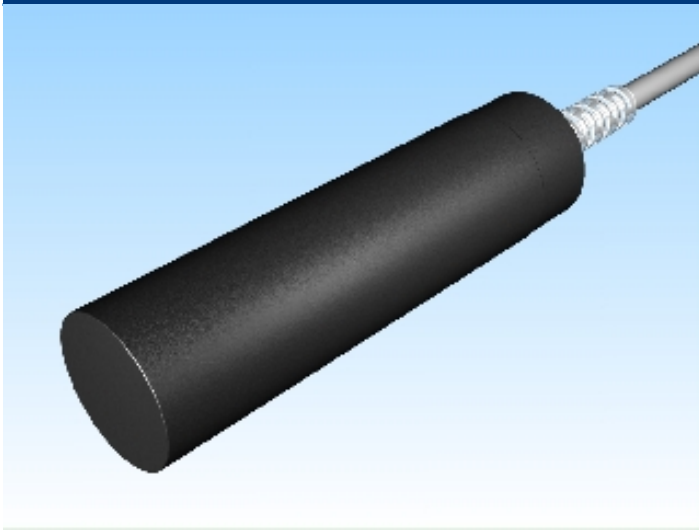


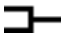


[Article Page](#)

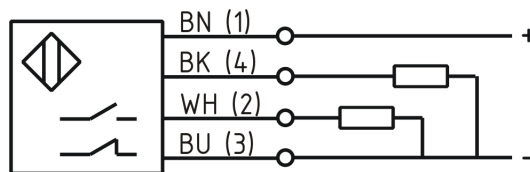
Product Description

inductive sensor DC



Name	KJ10-G20KN-DPA
Order number	08310000503
Switching distance	10 mm
Mounting	 non shielded
Switch type	 Changeover
Signal Type	DC PNP
Connection	 Cable

Connection diagramm



Dimension (in mm)	D 20 x 75
-------------------	-----------

Technical Specification

Operating voltage	10 - 30 V DC
Max. ripple	≤ 10 %
Voltage drop	2,4 V
Max. load current	200 mA
No load current	≤ 13 mA
Leakage current	≤ 10 µA
Switching frequency	500 Hz
Switching hysteresis	≤ 15 %
Operating temperature	-25 ° C to 70 ° C

Temperature drift	≤ 10 %
Repeat accuracy	≤ 5 %
Swiching state	LED
Time delay	300 ms
Short-circuit proof	yes
Overload protection	yes
Reverse voltage protection	yes
Protection category	IP67
EMC-level	DIN EN 60947-5-2: 2008
Housing material	PA 6.6
Cable length	2 m
Utilisation category	DC 13
Cable material	PVC grau LIYY
Cable cross	4x0.25 mm ²

Errors and omissions exceptet