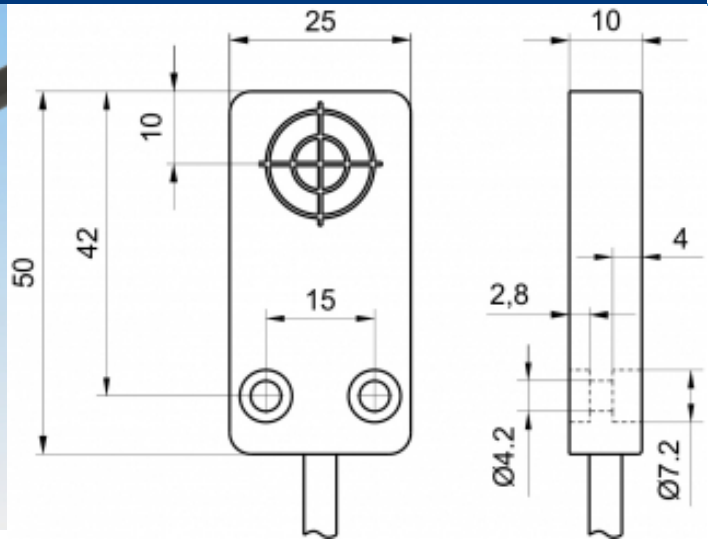
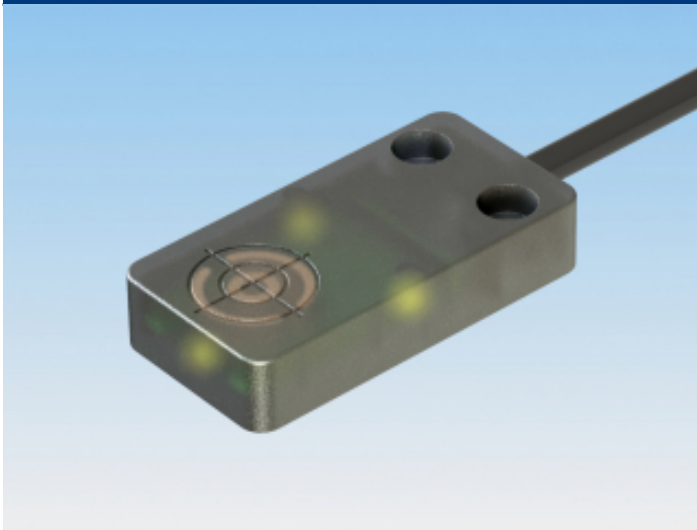


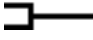


[Article Page](#)

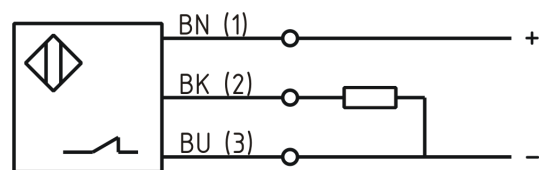
**Product Description**

**inductive sensor DC**



Name	KJ5-Q25KB-DPÖ
Order number	08310001285
Switching distance	5 mm
Mounting	 shielded
Switch type	 N.C.
Signal Type	PNP
Connection	 Cable

Connection diagramm



Dimension (in mm)	Q 25 x 10 x 50
-------------------	----------------

**Technical Specification**

Operating voltage	10 - 30 V DC
Max. ripple	≤ 10 %
Voltage drop	2,4 V
Max. load current	200 mA
No load current	≤ 13 mA
Leakage current	≤ 10 µA
Switching frequency	1000 Hz
Switching hysteresis	≤ 15 %
Operating temperature	-25 ° C to 70 ° C

Temperature drift	≤ 10 %
Repeat accuracy	≤ 5 %
Swiching state	LED
Short-circuit proof	yes
Overload protection	yes
Reverse voltage protection	yes
Protection category	IP 67
EMC-level	nach DIN EN 60947-5-2: 2008
Housing material	PA 6.6
Cable length	2 m
Utilisation category	DC 13
Cable material	PVC LIYY grau
Cable cross	3x0.34 mm <sup>2</sup>
FIT / MTTF	90,12 / 1267y

**Errors and omissions exceptet**