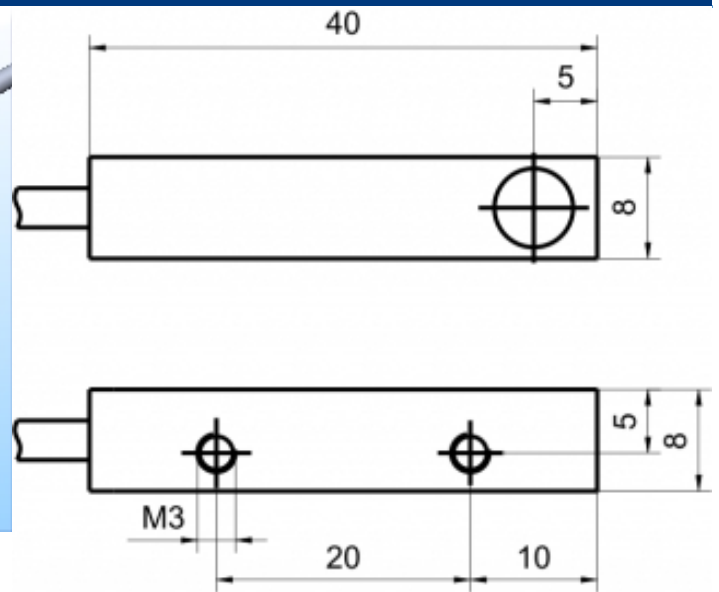
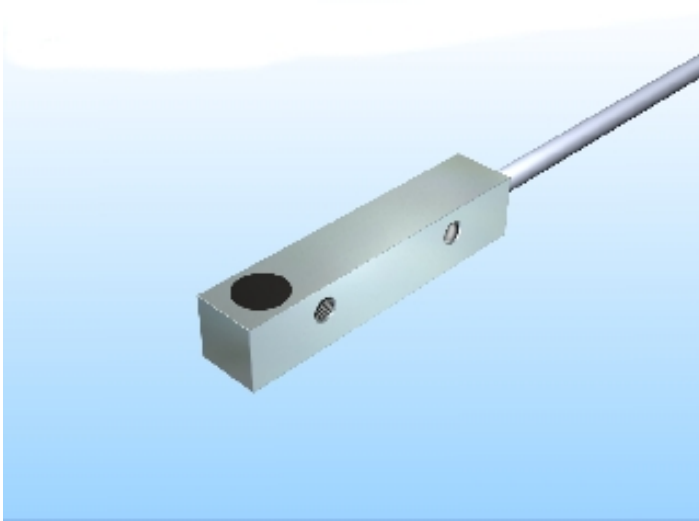





[Article Page](#)

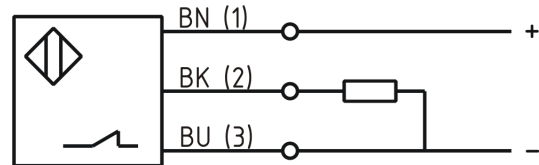
Product Description

inductive sensor DC



| | |
|--------------------|--|
| Name | KJ2-Q8MB-DPÖ |
| Order number | 08310020475 |
| Switching distance | 2 mm |
| Mounting |  shielded |
| Switch type |  N.C. |
| Signal Type | DC PNP |
| Connection |  Cable |

Connection diagramm



| | |
|-------------------|--------------|
| Dimension (in mm) | Q 8 x 8 x 40 |
|-------------------|--------------|

Technical Specification

| | |
|----------------------|-------------|
| Operating voltage | 10 - 30 VDC |
| Max. ripple | ≤ 10 % |
| Voltage drop | 2,4 V |
| Max. load current | 200 mA |
| No load current | ≤ 13 mA |
| Leakage current | ≤ 10 μA |
| Switching frequency | 1000 Hz |
| Switching hysteresis | ≤ 15 % |

| | |
|----------------------------------|--------------------------|
| Operating temperature | -25 ° C to 70 ° C |
| Temperature drift | ≤ 10 % |
| Repeat accuracy | ≤ 5 % |
| Swiching state | LED |
| Time delay | 100 ms |
| Short-circuit proof | yes |
| Overload protection | yes |
| Reverse voltage protection | yes |
| Protection category | IP67 |
| EMC-level | DIN EN 60947-5-2:2008 |
| Housing material | Brass, nickel plated |
| Material active face | Ultramid schwarz (black) |
| Cable length | 2 m |
| Utilisation category | DC 13 |
| Cable material | PVC LIYY grau (grey) |
| Cable cross | 3x0.14 mm ² |
| FIT / MTTF acc. to SIEMENS 29500 | 49,56 / 2369y |

Errors and omissions exceptet