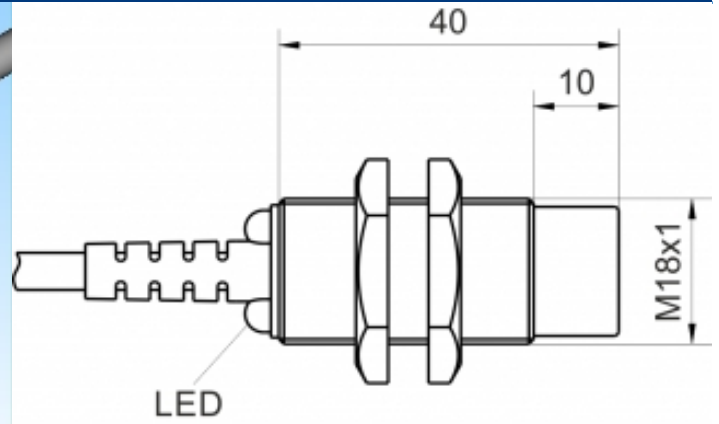
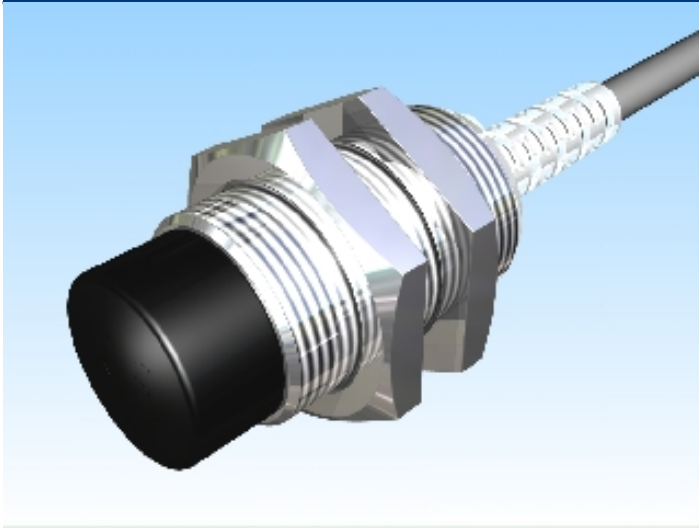


[Article Page](#)

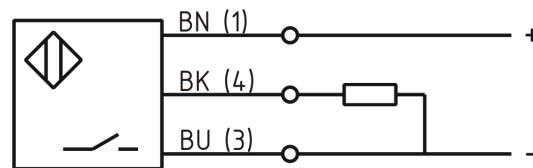
Product Description

inductive sensor temperature immune



| | |
|--------------------|-------------------|
| Name | KJ8-M18MN40-DPS-T |
| Order number | 08317646110 |
| Matchcode | 9964-6110 |
| Switching distance | 8 mm |
| Mounting | non shielded |
| Switch type | N.O. |
| Signal Type | DC PNP |
| Connection | Cable |

Connection diagramm



| | |
|-------------------|----------------------------|
| Dimension (in mm) | fine-pitch thread M18 x 40 |
|-------------------|----------------------------|

Technical Specification

| | |
|---------------------|-----------------------------------|
| Special features | temperature resistant up to 100°C |
| Operating voltage | 10 - 30 V DC |
| Max. ripple | ≤ 10 % |
| Voltage drop | 2,4 V |
| Max. load current | 200 mA |
| No load current | ≤ 10 mA |
| Leakage current | ≤ 10 µA |
| Switching frequency | 500 Hz |

| | |
|----------------------------------|------------------------|
| Switching hysteresis | ≤ 15 % |
| Operating temperature | -40 ° C to 100 ° C |
| Temperature drift | ≤ 10 % |
| Repeat accuracy | ≤ 10 % |
| Switching state | LED |
| Time delay | 300 ms |
| Short-circuit proof | yes |
| Overload protection | yes |
| Reverse voltage protection | yes |
| Protection category | IP67 |
| EMC-level | DIN EN 60947-5-2:2008 |
| Housing material | Brass, nickel plated |
| Material active face | PCB |
| Cable length | 2 m |
| Utilisation category | DC 13 |
| Cable material | PUR LIFY11Y schwarz |
| Nominal operating voltage | 24 V DC |
| Cable cross | 3x0.34 mm ² |
| FIT / MTTF acc. to SIEMENS 29500 | 49,88 / 2289y |

Errors and omissions excepted