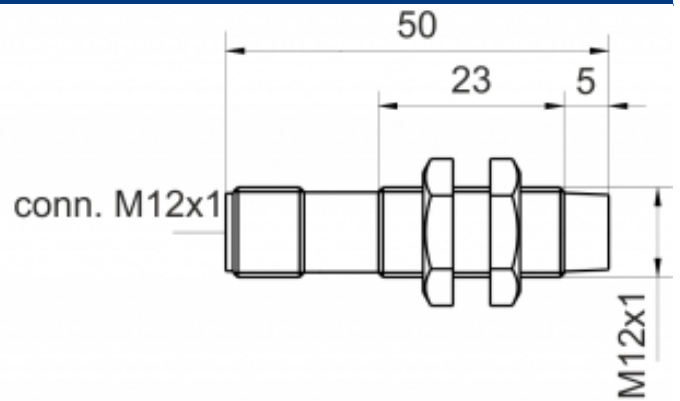
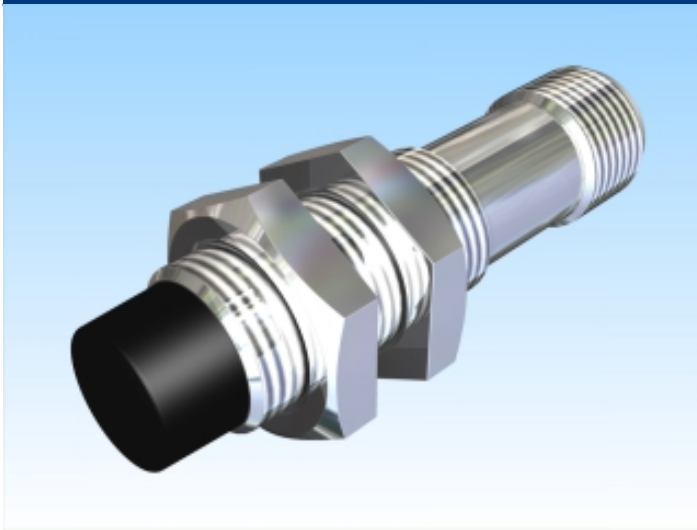



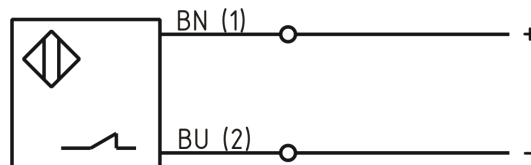
[Article Page](#)

Product Description

inductive sensor NAMUR



| | |
|---------------------|--|
| Name | KJ4-M12MN50-NA-V2 |
| Order number | 08317320465 |
| Matchcode | 9932-0465 |
| Switching distance | 4 mm |
| Mounting |  non shielded |
| Signal Type | Namur |
| Connection | connector M12 |
| Connection diagramm | |



| | |
|-------------------|----------------------------|
| Dimension (in mm) | fine-pitch thread M12 x 50 |
|-------------------|----------------------------|

Technical Specification

| | |
|----------------------------|-------------------|
| Operating voltage | 6 - 12 V DC |
| Max. ripple | ≤ 5 % |
| No load current | ≤ 3,5 mA |
| Switching frequency | 1000 Hz |
| Operating temperature | -25 ° C to 60 ° C |
| Temperature drift | ≤ 10 % |
| Repeat accuracy | ≤ 10 % |
| Time delay | 100 ms |
| Short-circuit proof | yes |
| Overload protection | yes |
| Reverse voltage protection | yes |

| | |
|----------------------------------|--------------------------|
| Protection category | IP67 |
| EMC-level | DIN EN 60947-5-6:2000-12 |
| Housing material | Brass, nickel plated |
| Material active face | PCB |
| Utilisation category | DC 13 |
| Contact material | CuSn |
| Contact surface material | NiAu |
| Contact holder | PA 6 |
| Nominal operating voltage | 8,2 V DC |
| Termination | Connector M12 4pin |
| Load Current OFF | ca. 0,5 mA |
| Load Current ON | ca. 3,5 mA |
| FIT / MTTF acc. to SIEMENS 29500 | 17,38 / 6568y |

Errors and omissions exceptet